

GRADATION

WS 2000 Test Sieves And Accessories (Continue)

Brand : DIMENSI (Malaysia)

Precision Granulometry

DIMENSI offer the widest range of precision sieves in standard sizes specific for every industrial sector, as well as possibility of manufacture of special types and sieves suitable for other sifters.

All **DIMENSI** sieves are supplied with a quality certificate stating the aperture size, quality and tension of the mesh (for apertures smaller than 100 micron). They are light, suitable for dry and wet screening, with patented design, through out to offer the maximum hygiene, without edges to avoid the accumulation of dust; Easy to use. Quick service and urgent manufacture are the main points in which **DIMENSI** differ greatly from the

Laboratory Test Sieves				Pan And Cover Sets			
Standard	Diameter	Height	Material	Standard	Diameter	Height	Material
	60	18	SS. A-304		60	18	SS. A-304
	75 (3")	60	SS. A-304		75 (3")	70	SS. A-304
	75 (3")	27	AA		75 (3")	29	AA
	100	24	SS. A-304		100	24	SS. A-304
	100	24	AA		100	24	AA
	150	29	SS. A-304		150	31	SS. A-304
	150	29	AA		150	31	AA
	200	33	AA		200	33	AA
	200	25	SS. A-304		200	33	SS. A-304
	200	50	SS. A-304		200	48	SS. A-304
	203 (8")	33	AA		203 (8")	33	AA
	203 (8")	25'4 (1")	SS. A-304		203 (8")	33	SS. A-304
	203 (8")	50'8 (2")	SS. A-304		203 (8")	48	SS. A-304
	203 (8")	50'8 (2")	BRASS		203 (8")	48	BRASS
	250	70	AA		250	75	AA
	250	70	SS. A-304		250	75	SS. A-304
	300	80	AA		300	75	AA
	300	80	SS. A-304		300	75	SS. A-304
	400	100	SS. A-304		400	100	SS. A-304
	450	100	SS. A-304				
	500	10	SS. A-304				
	600	100	SS. A-304				

Pan And Cover Sets for Wet Screening		
Diameter	Height	Material
150 mm	31	SS. A-304
200 mm	48	SS. A-304
203 mm (8")	48	SS. A-304

Br - Brass **SS** - Stainless Steel **AA** - Anodized aluminium
Other materials and sizes available on request.



GRADATION

WS 2005 to WS 2016 Riffle Boxes/Sample Dividers & Sieve Shaker – Mechanical Motor Driven

Sample Splitters

DIMENSI sample splitters with fixed opening. ASTM C 136, C702, D271, D492 - AASHTO 127, T87 - BS 812. Designed for the precise division of material such as : aggregates, sand, gravel and similar. Galvanized or stainless steel made, it is supplied with two collecting pans.

Cat. No	Material	Chute width	Chute No	Net weight approx. kg
WS 2005	SS	1/4"	12	1.1
WS 2005/1	SS	1/2"	12	1.1
WS 2006	Gal.	3/4"	12	5.1
WS 2006/1	Gal.	1"	12	8.1
WS 2006/2	Gal.	1 1/2"	8	9.1
WS 2006/3	Gal.	2"	8	13.1
WS 2006/4	Gal.	2 1/2"	8	15.1



WS 2005 TO WS 2015



WS 2015/1

WS 2007 to WS 2015 - Riffle Boxes/Sample Dividers

Riffle boxes complete with 3 rigid metal containers. For dividing dry materials such as sands, gravels, and similar into the required barch sizes for testing. **Standards - BS 812, 1377, 1924**

Cat. No	Max. Size sample mm	Slot width mm	No. of slots	Appr cap. dm ³	Net weight approx. kg
WS 2007	5	7	12	0.24	1.5
WS 2008	10	15	12	2	5
WS 2009	20	30	10	4.6	19
WS 2010	40	50	8	14	23.5
WS 2011	13	20	10	3	5.5
WS 2012	20	25	10	3.9	19
WS 2013	25	38	8	9.6	19
WS 2014	50	64	8	21	27
WS 2015	40	45	8	11.3	23.5

Manufactured from heavy duty steel sheet. Each riffle box is supplied with 3 metal pans, two of these fit underneath the riffle whilst in use and the third for pouring the undivided sample.

WS 2015/1 DIMENSI Large Capacity Sample Splitter. **ASTM C 702** for aggregates up to 35 mm size, complete with 2 Nos. receiving trays.

It is made of heavy duty steel welded. Dimensions : 990 mm height. Hopper size : 738 mm long x 485 mm wide. Weight : 51 kg

WS 2015/2 Spare tray for WS 2015

WS 2016 DIMENSI Sieve Shaker Motor Drive Unit for 220-240V, 50Hz, 1Ph. Accepts up to eight 200 mm diameter sieves or up to six 300 mm diameter sieves, lid and receiver. The unique action of this range of shakers imparts a circular motion to the material being sieve so that it makes a slow progression over the surface of the sieve. At the same time, a rapid vertical movement agitates the sample and assists in clearing the apertures. A time-switch can be set for tests of varying duration. Sieves are held in place with a positive quick-release clamp attached to the base the rods.

GRADATION

WS 2017 to WS 2019/8 Sieve Shaker – Digital Motor Driven & Ultrasonic Cleaning Equipment

WS 2017 DIMENSI Sieve Shaker - Digital Electromagnetic Sifter

General Features

The digital control system of **DIMENSI** sifter allows precise control of Vibration Power Level and of time before stopping. Likewise, it allows discontinuous vibration control. Its performance as integrated digital system reaches a high level of precision and reliability, as well as extreme longevity in hours of functions.

Description

1. Smooth surface bars for fixing the sieves
2. Quick fixing closures for adjusting the bars to the height of the column
3. Vibratory plinth
4. Display and programming panel of the **DIMENSI** sifter
5. Adjustable rubber feet, allowing perfect levelling of the sifter and avoiding the transmission of vibration to the laboratory bench
6. Column of sieves



Measures and capacity

- Height : 260 mms, Diameter : 300 mms, Total height(sieves included) : 750 mms, Voltage : 220V, Frequency : 50 or 60 Hz
- Suitable for sieves from 100 mms. dia. to 203 mms of diameter. Also available for sieves of 250 mms. height or 16 sieves of 25 mms effective height. It can also be supplied to hold 11 sieves of 50 mms. height of 22 sieves of 25 mms. height, on request.

Display

The display and programming panel of the **DIMENSI** sifter is composed of two groups of displays, three groups of pushbuttons and one mains switch. The system may be divided into nine units : Mains Switch, Time Display, Power Display, ON Button, OFF Button, Time increase Button, Time Decrease Button, Power Increase Button. **DIMENSI** range of products offers the most advanced technology together with the guarantee of more than a century of experience.

Ultrasonic Cleaning Equipment

A new line of inexpensive low-cost ultrasonic cleaning baths
High-quality for less money.

- Powerful cleaning with industrial, heavy-duty transducers (35 kHz)
- Professional equipment, all in stainless steel
- Comprehensive range of accessories available. Acid-resistance insert tub, glass beakers, immersible cooler and many more.

WS2019/1	All-stainless steel unit with timer and heater (capacity of half gallon)
WS 2019/2	A 3-quart capacity, all stainless steel unit with timer
WS 2019/3	With timer and heater
WS 2019/4	All-stainless steel unit with timer and drain (capacity of 1 1/2 gallons)
WS 2019/5	With timer, heater and drain
WS 2019/6	All-stainless steel unit with timer and drain (capacity of 3 1/4 gallons)
WS 2019/7	With timer, heater and drain
WS 2019/8	With separate generator, welded tank with heater and drain (capacity of 4 3/4 gallons)

Cat No/ Model No	Int. dimension of tank (mm)	Content L	Weight kg	Frequency kHz	Connected power Watts	Casing Stainles s steel	Heatin g	Timer
WS 2019/1	151 x 137 x 100 mm	1.75	2.5	35	100	Yes	Yes	Yes
WS 2019/2	240 x 137 x 100 mm	2.75	3.2	35	40	Yes	-	Yes
WS 2019/3	240 x 137 x 100 mm	2.75	3.2	35	240	Yes	Yes	Yes
WS 2019/4	300 x 151 x 150 mm	5.75	5.0	35	85	Yes	-	Yes
WS 2019/5	300 x 240 x 200 mm	5.75	5.0	35	285	Yes	Yes	Yes
WS 2019/6	300 x 240 x 200 mm	12.75	8.0	35	160	Yes	-	Yes
WS 2019/7	300 x 270 x 200 mm	12.75	8.0	35	560	Yes	Yes	Yes
WS 2019/8								
Consist of								
Tank	300 x 270 x 200 mm	16	14.0	35	800	Yes	Yes	
Separate generator			4.4		320	Yes		Yes

GRADATION

WS 2020 to WS 2040/1 Weighing samples & Specific gravity - Buoyancy method

Precision Balances



MODEL	WS 2020	WS 2021	WS 2022	WS 2022/1	WS2023
Readability	0.01 g	0.01 g	0.01 g	0.01 g	0.01 g/ 0.1 g DeltaRange
Weighing capacity	1310 g	2100 g	3100 g	4000 g	600 g/ 3100 g
Repeatability (s)	5 mg	5 mg	5 mg	5 mg	2 mg/ 5 mg
Linearity	0.02 g	0.02 g	0.02 g	0.02 g	0.02 g/ 0.1 g
Housing (W x D x H)	190 x 290 x 62 mm	190 x 290 x 62 mm	190 x 290 x 62 mm		190 x 290 x 62 mm
Calibration weight	1000 g	2000 g	2000 g	2000g	2000 g

MODEL	WS 2024	WS2025	WS 2026	WS 2027
Readability	0.1 g	0.1 g	0.1 g	0.1 g
Weighing capacity	1510 g	3100 g	6100 g	16100 g
Repeatability (s)	0.05 g	0.05 g	0.05 g	0.1 g
Linearity	0.1 g	0.1 g	0.1 g	0.3 g
Housing (W x D x H)	190 x 290 x 62 mm	190 x 290 x 62 mm	190 x 290 x 82 mm	381 x 321 x 92 mm
Weighing pan	180 x 166 mm	180 x 166 mm	175 x 166 mm	349 x 232 mm
Calibration weight	1000 g	2000 g	4000 g	8000 g

MODEL	WS 2028	WS 2029	WS 2030	WS 2031	WS 2032	WS 2033	WS 2034	WS 2035
Readability	0.1 mg	0.1 mg	0.1 mg	0.001 g	0.001 g	0.001 g/0.01 g DeltaRange	0.01 g	0.01 g
Weighing capacity	51 g	101 g	210 g	151 g	310 g	60 g/310 g	310 g	610 g
Repeatability (s)	0.1 mg	0.1 mg	0.1 mg	0.001 g	0.001 g	0.001 g/0.005 g	0.005 g	0.01 g
Linearity	± 0.2 mg	± 0.2 mg	± 0.3 mg	± 0.002 g	± 0.002 g	± 0.002 g/± 0.01 g	± 0.02 g	± 0.02 g
Housing (WxDxH,mm)	190x290x265	190x290x339		190x290x193			190x290x62	
Weighing pan(mm)	dia. 80			dia. 100			180 x 167	
Calibration weight	50 g	100 g	200 g	100 g*	200 g*	200 g*	200 g*	500 g*

Buoyancy Balances

Buoyancy balance method consists of a support frame, which incorporates a water tank and designed to support the electronic balance. The lower part of the frame incorporates a moving platform can be lifted up and down to carry the water container allowing the test specimens to be weighed in both air and water. Overall dimensions : 500x500x1200 mm. approx. Balance will have to be separate order.

Buoyancy Balances

Buoyancy balance method consists of a support frame, which incorporates a water tank and designed to support the electronic balance. The lower part of the frame incorporates a moving platform can be lifted up and down to carry the water container allowing the test specimens to be weighed in both air and water. Overall dimensions : 500x500x1200 mm. approx. Balance will have to be separate order.

WS 2037 DIMENSI Specific gravity frame

WS 2038 DIMENSI Specific gravity tank-stainless steel.

WS 2039 DIMENSI Specific gravity tank-galvanised steel.

Dimensions : 450x300x300 mm (lxwxh)

WS 2040 DIMENSI Density Basket

For use in specific gravity tests. Stainless steel mesh with approx. 200 mm dia. x 200 mm high. Complete with handle and mesh size of 3.35 mm (No.6).

Standards - ASTM C 127, AASHTO T 85, BS 812

WS 2040/1 DIMENSI Analysis Kit, this method is Suitable for the determination of the cement, Coarse and fine aggregate content of concrete And has a test duration of approx. 90 min. The The proportion of cement, coarse and fine aggregate is calculated on the basis of pre-determined values of relative densities. Comprising eight corrosion resistant buckets, funnel, 5mm and 150 um x 450 mm dia. sieves, spray tube and 16 mm tamping rod.



GRADATION

WS 2041 to WS 2052/1 Weighing samples Mechanical Balances & Digital Scale Balance

WS 2041 Cent-O-Gram

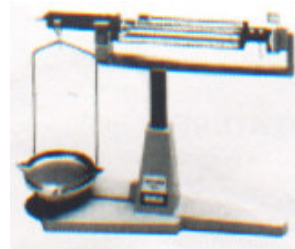
Weighing apparatus which has no loose weights and built-in for rugged use.
Capacity : 311 gram x 0.01 gram sensitivity.

The apparatus includes :

* Magnetic damping, * Stainless steel pan, * No loose weights

* Zero adjustment, * Specific gravity attachment

Beams : 1x 0.01 g, 10 x 0.1 g, 100 x 1 g, 200 x 10 g. Weight approx : 2.5 kg net.



WS 2042 Dial-O-Gram

Slightly more sophisticated than WS 3041 having a dial control for fine sensitivity 0.01 g.

Capacity : 310 gram x 0.01 gram sensitivity.

The apparatus includes :

* Magnetic damping, * Stainless steel pan, * No loose weights

* Tare 225 gram, * Specific gravity attachment. Weight : 3 kg net.



WS 2043 Harvard Trip Balance

Magnetic damping permits fast and accurate results.

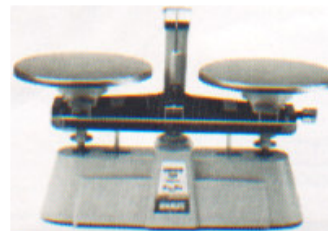
Capacity : 2000 gram x 0.1 gram sensitivity.

The apparatus includes :

* Magnetic damping, * Stainless steel pans, * Under bench weight

* Tare 225 gram, * Zero adjustment

Beams : 200 x 10 gram and 10 x 0.1 gram. Weight : 3 kg net.



Accessories

WS 2045 Set of weights. 1 x 1 kg, 2 x 500 g, 2 x 200 g, 1 x 100g.

WS 2046 Footed polypropylene scoop 300 x 150 x 70 mm, complete with counterweight.

WS 2047 DIMENSI Triple Beam Balance

Magnetic damping increases speed of weighing.

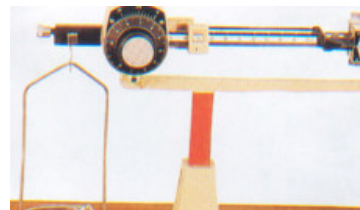
Capacity : 2610 gram x 0.1 gram sensitivity.

The apparatus includes :

* Magnetic damping, * Stainless steel pan, * Tare 225 gram

* 2 x 1000 gram and 1 x 500 gram weights

Beams : 500 x 100 gram, 100 x 10 gram and 10 x 0.1 g. Weight : 3.5 kg net.



Accessories

WS 2048 Wooden carrying case for WS 3047

WS 3049 Plastic scoop and counterweight



GRADATION

WS 2053 to WS 2071 Weighing samples Semi-Automatic Balance & Sand Aggregate and Filter & Flakiness and Flatness

SEMI-AUTOMATIC BALANCE

- * High capacity and accuracy
- * Fast repeat weight
- * Scoop or flat pan option

The range of semi-automatic balances is design and the construction features a totally enclosed mechanism, engineered to operate with minimum maintenance. The range of capacities and sensitivities listed is designed to encompass various British, ASTM and other international standards. Order weight set to suit capacity.

Accessories and Spares for Semi-Automatic Balances **Recommended Spares Kit for WS 2053 to WS 2054.**

WS 2055 Spare Kit, comprising, agate bearing, range spring, adjuster base spring, front pillar glass, rear and a levelling foot.

Recommended Spares Kit for WS 2056 and WS 2057.

WS 2058 Spares Kit, comprising, agate bearing, range spring, adjuster base spring, front pillar glass, rear and a levelling foot.

WS 2059 Scoop Protectors, set of 4 rubber protectors for scoop support.

WS 2060 Levelling Foot, adjustable foot for all models.

DT 2061 Scoop and Tare Weight, flat pan scoop suitable for **DT 2053 to DT 2054**. Not suitable for 7 kg capacity model.

WS 2061/1 DIMENSI Weighing Balance

Counter scale designed and manufactured to high engineering tolerances and conform to British Standards and the SIRIM-SIME, Malaysia weights and measurement Standard. The scales incorporated die-cast beams with case-hardened steel knife edges, bearing stays, leg steels and friction plates. Finished in gold enamel, a wide range of goods fitting are available. Capacity : 10 kg x 1.0 g sensitivity c/w weight set.

Determination of Flakiness and Elongation

Aggregates which are flaky and/or elongated will often lower the workability of a concrete mix and may also effect long term durability. In bituminous mixtures flaky aggregate makes for a harsh mix and may also crack and break up during compaction by rolling. The flakiness of aggregate is determined by measuring the thickness of individual particles.

WS 2062 DIMENSI Flakiness Sieves Test Set

Used to determine if aggregate particles are to be considered flaky, i.e. their thickness is less than 0.6 of their nominal size.

The determination of the flakiness index can be made using special sieves having elongated openings. Each sieve is made from heavy gauge steel and each one can also be ordered separately. Total weight 15 kg. The set comprises the following sieves :

Cat No	Slot width Mm	Slot length mm	Dimensions mm
WS 2063	4.9	30	290x237x75
WS 2064	7.2	40	305x248x75
WS 2065	10.2	50	330x257x75
WS 2066	14.4	60	358x271x75
WS 2067	19.7	80	391x283x75
WS 2068	26.3	90	424x293x75
WS 2069	33.9	100	467x305x75

FIELD AND LABORATORY SCALES.

- * Accurate and reliable
- * No Loose weights
- * Sturdy construction
- * Low maintenance

Ideal for site laboratories, these precision scales are easily transportable. The scale can be supplied with a stainless steel scoop or a stainless steel round flat pan.



WS 2071/1 DIMENSI Sand Absorption Cone

WS 2071/2 DIMENSI Tamping Rod for use with **WS 2071/1**

WS 2070 DIMENSI Thickness Gauge/Flakiness Gauge. Used to determine if aggregate particles are to be considered flaky, that is their thickness is less than 0.6 of their nominal size. Made of heavy gauge sheet steel to dimensions given in the specifications. Weight 200 g.

Standards - BS 81WS 2071 DIMENSI Length Gauge. Aggregate particles are considered elongated when their length is more than 1.8 of their nominal size. Made of non-corrodable metal and mounted on a hardwood base. Weight 1.1 kg.

Standards - BS 812

WS 2071/1 DIMENSI Sand Absorption Cone

WS 2071/2 DIMENSI Tamping Rod for use with **WS 2071/1**

GRADATION

WS 2072 to WS 2076/1 Weighing Samples Electronic Digital Bench Scale, DIMENSI Mixers & Isomantle Electric Heater

Electronic Digital Bench Scale

With counting function.

Features :

- Full digital calibration, tare weighing function, Accumulation function, battery life : 180 hours
- Low battery indicator, overload display warning, Stainless steel platform
- Large, easy to read display (25mm height), Removable headworks for wall or desk mounting

Specifications :

- 12 Key version, Selectable modes and counting sample
- Built-in counting & checking function, Capacities from 30 kg to 600 kg



Cat.	Capacity and Graduation (Auto dual range)/Dimensions	
WS 2072	30 kg x 5 g	520 x 370 x 120 mm
WS 2073	60 kg x 10 g	520 x 370 x 120 mm
WS 2073/1	120 kg x 20 g	600 x 460 x 130 mm
WS 2073/2	150 kg x 50 g	600 x 460 x 130 mm
WS 2073/3	300 kg x 50 g	600 x 460 x 130 mm
WS 2073/4	600 kg x 100 g	600 x 460 x 130 mm

Electronic Digital Table Scale

With counting function.

Features :

- Check weighing function (High & Low Preset)
- 6 Digits & Large LCD Display (25mm Height) for easy readout)
- Accurate, Durable and Compact, Adaptor 9V 800mAH & rechargeable battery operated, Large Display, Flexible Display Mounting, KG/LB/Conversion
- Option : Backlite, RS-232 Output for Computer and Parallel Output for Printer.
- Battery Life : Over 200 hours

SIZE	Dia 150 mm	Dia 150 mm	Dia 150 mm	280x230mm	280x230mm	280x230mm	280x230mm	280x230mm
N.W	3.1 kg	3.1 kg	3.1 kg	4.2 kg	4.2 kg	4.2 kg	4.2 kg	4.2 kg
POWER	-----	-----	-----	220-240V,	50Hz, 1pH	-----	-----	-----

DIMENSI Mixers

The purpose of this DIMENSI Mixers is to make preparation for testing of bituminous, soil and/or concrete mixtures. The model WS 2075 Mixer has a bowl capacity of five quarts and features a 1/6 horsepower motor, # 10 attachment hub, as well as a cord and plug as standard equipment. There are a variety of attachments and accessories available for the WS 2075 which is supplied with each mixer. i.e stainless steel bowl, a "B" batter beater and a stainless steel wire whip. The model WS 2076 mixer is a 20 quart, bench-type mixer with a 1/2 H.P. Hobart-built motor, and a # 12 attachment hub. With the use of special agitators, a 12 quart bowl may be used on the WS 2076 mixers.

Most WS 2076 mixers are equipped with a 0-15 minute timer. Supplied stainless steel bowl, a "B" batter beater and a stainless steel wire whip. The mixer rotate a planetary action to thoroughly mix the samples. The mounted hand level is to raise, lower or to lock the bowl in position.



Cat. No	Capacity	Motor
WS 2075	5 Quarts	1/6 H.P.
WS 2076	20 Quarts	1/2 H.P.

WS 2076/1 Isomantle Electric Heater for 5 litre bench mounted mixer

WS 2076/2 Isomantle Electric Heater for 20 litre bench mounted mixer

GRADATION

WS 2077 to WS 2078/5 SILVERSON Shear Laboratory Mixers & Wet Washing Sieves

SILVERSON High Shear Laboratory Mixers

WS 2077 : Model L4R

This mixer is designed for processing larger volumes and/or higher viscosities and is suitable for the widest range of applications mixing, emulsifying, homogenising, disintegrating, dissolving with an efficiency and flexibility unmatched by other machines. With a capacity from 1 ml to 12 litres and the ability to mix in-line with flow rates up to 20 litres/minutes, it offers excellent reproducibility when scaling up to full scale production and provides an accurate and easy means of forecasting the performance of larger Silverson machines under full-scale working conditions.

Motor Unit Robust two piece casing designed for cool, quiet and continuous operation.

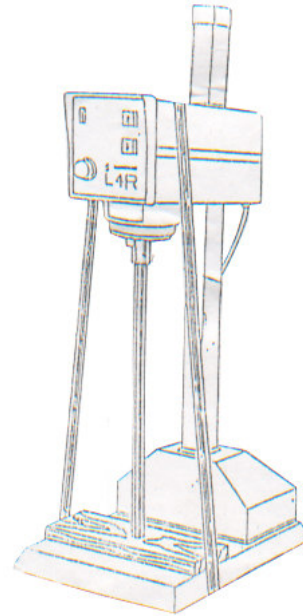
Motor 250W (0.33hp) 220 volt, 1pH and 50/60 Hz. Nominal maximum speed 8000 rpm (6000 rpm under full load).

Speed Control Infinitely variable electronic speed control with integral on/off switch.

Electric Rise & Fall Bench Stand The mixing unit may be effortlessly raised and lowered using the push-button control on the motor unit.

Construction All wetted parts are in grade 316 stainless steel with the exception of the bush which may be bronze alloy or PTFE.

Supplied complete with a General Purpose Disintegrating Head, Square Hole High Shear Screen, Standard Emulsor Screen and Axial Flow Head.



WS 2077

DIMENSI Wet Washing Sieves used for wet sieving of soil, cement and fine aggregates. Sieves have deep frames to prevent loss of fines when washing and have a brass frame.

WS 2078 DIMENSI Brass frame 200 mm dia. and 200 mm deep with aperture size of 75 um.

WS 2078/1 DIMENSI Brass frame 200 mm dia. and 200 mm deep with aperture size of 63 um.

WS 2078/2 DYNAMOMETER is an instrument that can be used in place of a proving ring in instances where sustained high accuracy is not a prime requisite. The Dynamometer is designed to measure mechanical forces and is particularly useful in calibrating universal testing machines, mechanical and hydraulic presses and other force measurement equipment. The ring Dynamometer is constructed of an elastic alloy steel load ring with fully-jeweled precision dial indicator. When force is applied to the ring, a change in diameter or deflection occurs.

WS 2078/3 DIMENSI Portable Fume Hood. The universal fume hood is ideal for laboratories requiring light to medium duty removal of corrosive vapors and odors. Since these hoods are light-weight and portable 36" x 30" and are perfect for laboratories where space is limited. The fume hood features a sturdy dual wall construction which reduces sound and vibration while a fully adjustable sliding sash which is constructed of 3/16" shatterproof plexiglass allows easy access into the fume chamber. The adjustable variable flow baffle directs air through the fume chamber, switch and wiring are not included and must be supplied by customer to comply with local codes. The blower and light, must be installed in order to comply with local codes.

WS 2078/4 Spring Scale, is used for field soil test in mechanical analysis of aggregates. For a direct reading, the loose pointer is set to any position on the 200 mm dia. dial with thumbscrew.

WS 2078/5 Straight Spring Balance, is heavy duty for batch weighing with reliable accuracy. The easy to read recessed gauge has deep etched graduations. The adjustable indicator is set to zero for taring.

